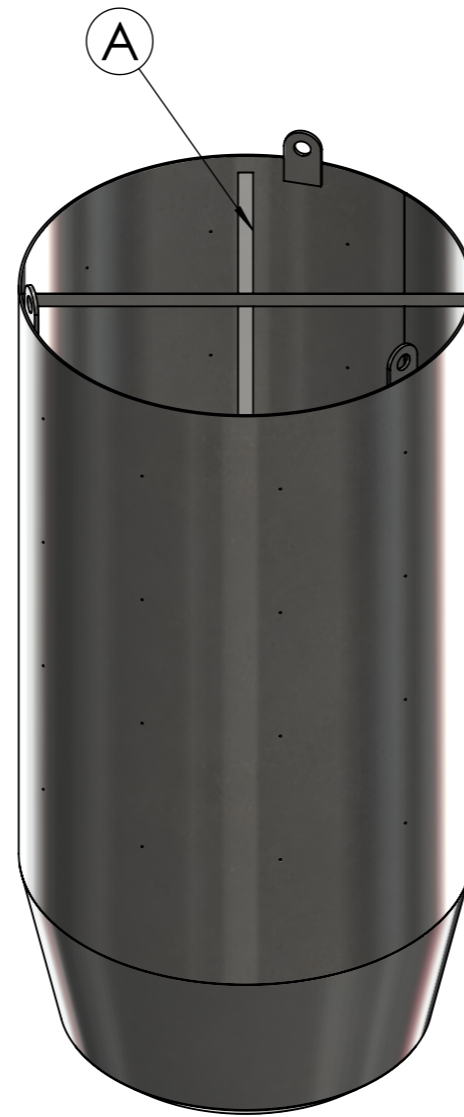
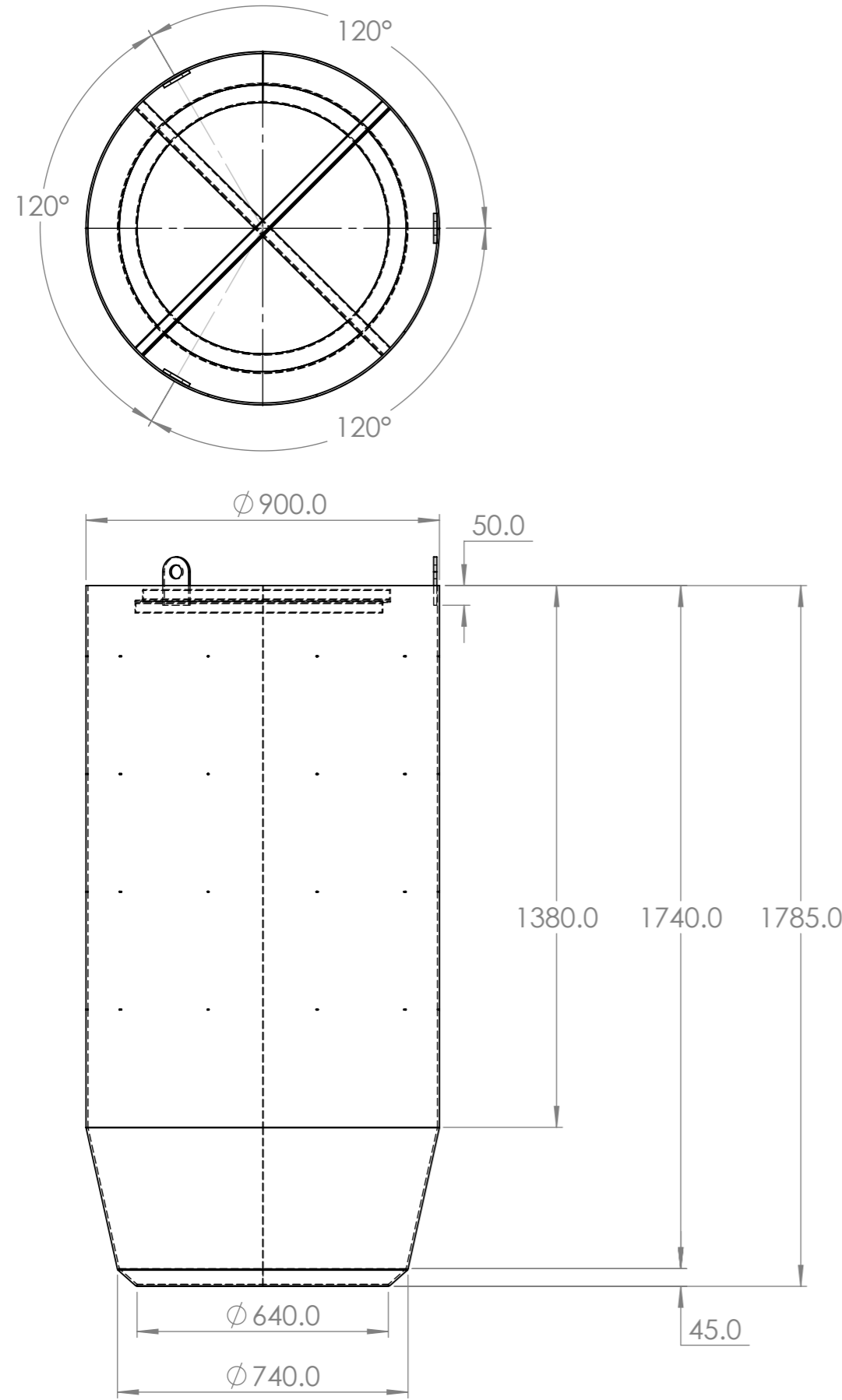


IF IN DOUBT ASK



REVISIONS				
ZONE	REV.	DESCRIPTION	DATE	APPROVED
F5	A	Cross Braces changed to 30mm * 30mm RSA	22/08/2024	

N.B.
Overall outside diameter critical, and measured over 6 diameters. Cylinder must be square, parallel, and concentric over full length.

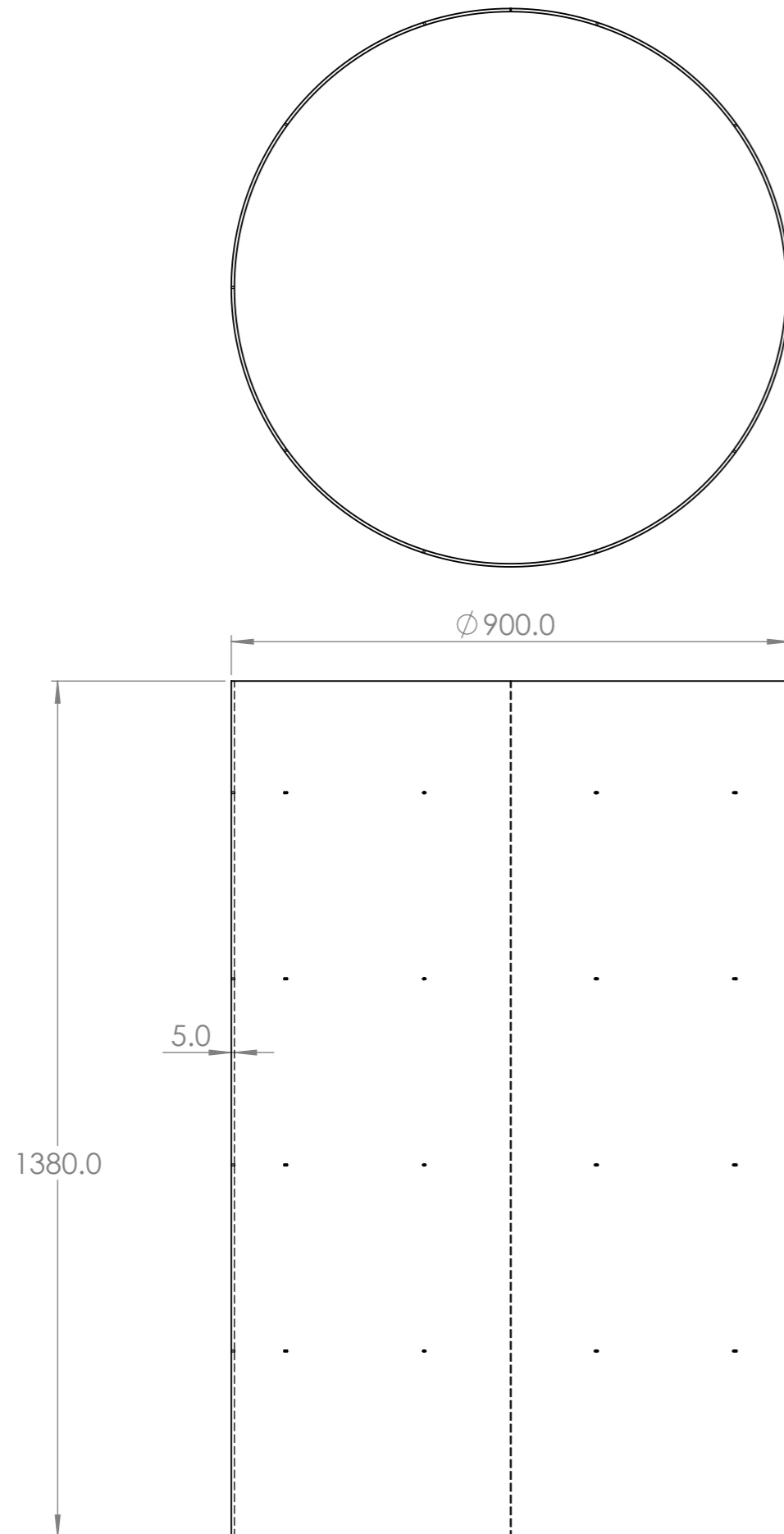
Externally fully welded, 100% penetration, and all welds external to be dressed flush.

ITEM NO.	PART NUMBER	DESCRIPTION	QTY.
1	900mm Former Body Cylinder		1
2	Base Disk		1
3	Top Cone		1
4	Bottom Cone		1
5	Lifting Tab		3
6	Cross Brace		1


Sheet Number SHEET 1 OF 10		Approx Weight (Kg): 209.52		Revision: A
Cad Innovation Ltd.				Date:
				Material: Material <not specified>
				Qty: N/A
Designed/Drawn By	P Hodnett			
Date Drawn	15 August 2024			
Finish	N/A			
Customer	Thomas Dudley			
Project	900mm Diameter Former			
Drawing	900mm Diameter Former			
Part Configuration	Default			



IF IN DOUBT ASK



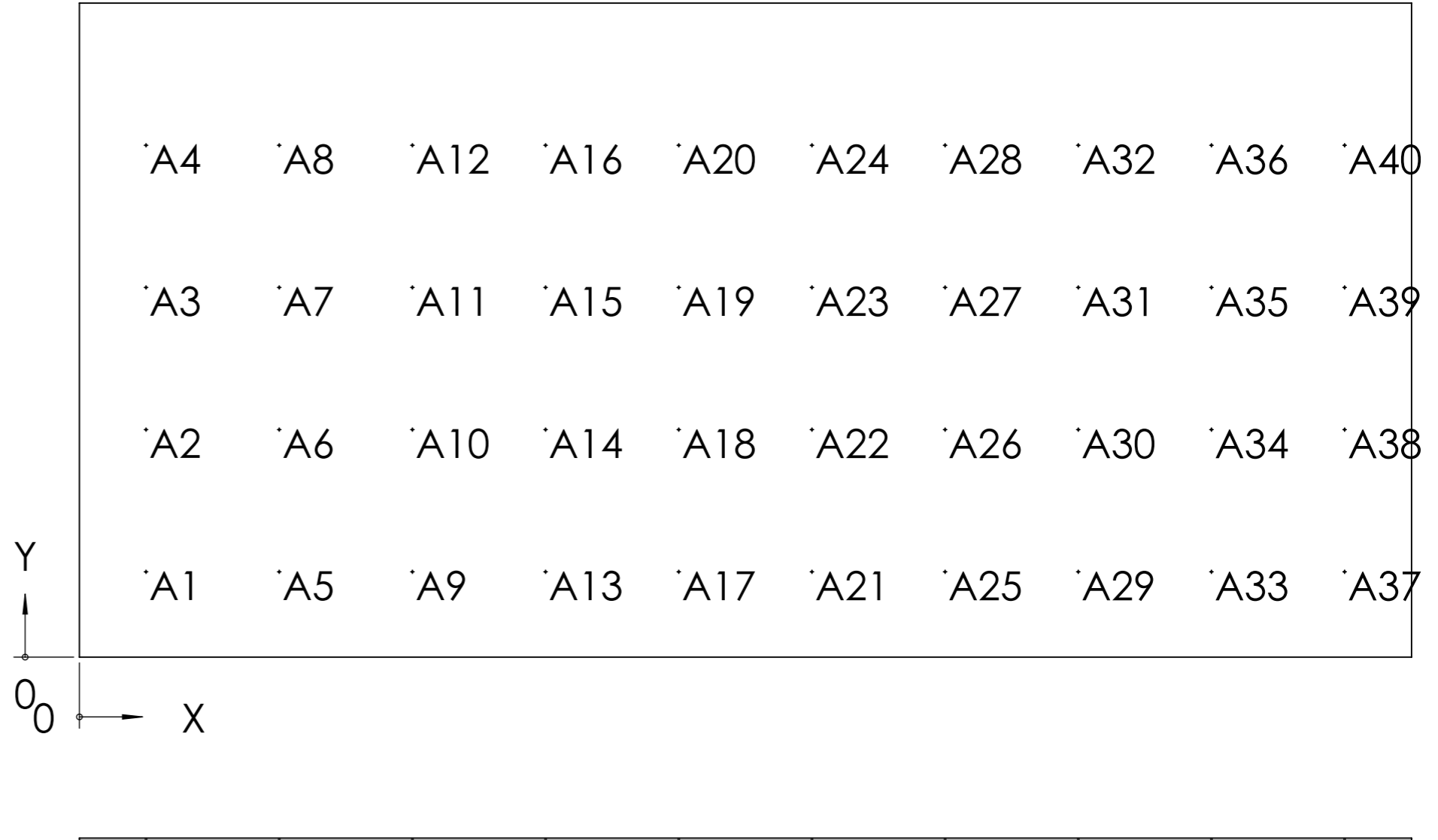
1 off required per unit.
See separate flat panel drawing.
STEP FILE TO BE USED FOR MANUFACTURE.

Sheet Number	SHEET 2 OF 10	Approx Weight (Kg):	151.26	Revision:	A
Cad Innovation Ltd.				Date:	
				Material:	Plain Carbon Steel
Designed/Drawn By	P Hodnett	Qty:	N/A	 CAD Innovation Ltd <small>Digitally Developing for the Engineered World</small>	
Date Drawn	15 August 2024				
Finish	N/A				
Customer	Thomas Dudley				
Project	900mm Diameter Former				
Drawing	900mm Former Body Cylinder				
Part Configuration	Default				


IF IN DOUBT ASK

N.B. THIS ITEM CONSTRUCTED OUTSIDE OF MAIN ASSEMBLY.
ENSURE ANY FUTURE CHANGES ARE TRANSFERRED.

TAG	X LOC	Y LOC	SIZE
A1	140.50	180	Ø 3.0 THRU
A2	140.50	480	Ø 3.0 THRU
A3	140.50	780	Ø 3.0 THRU
A4	140.50	1080	Ø 3.0 THRU
A5	421.50	180	Ø 3.0 THRU
A6	421.50	480	Ø 3.0 THRU
A7	421.50	780	Ø 3.0 THRU
A8	421.50	1080	Ø 3.0 THRU
A9	702.50	180	Ø 3.0 THRU
A10	702.50	480	Ø 3.0 THRU
A11	702.50	780	Ø 3.0 THRU
A12	702.50	1080	Ø 3.0 THRU
A13	983.50	180	Ø 3.0 THRU
A14	983.50	480	Ø 3.0 THRU
A15	983.50	780	Ø 3.0 THRU
A16	983.50	1080	Ø 3.0 THRU
A17	1264.50	180	Ø 3.0 THRU
A18	1264.50	480	Ø 3.0 THRU
A19	1264.50	780	Ø 3.0 THRU
A20	1264.50	1080	Ø 3.0 THRU
A21	1545.50	180	Ø 3.0 THRU
A22	1545.50	480	Ø 3.0 THRU
A23	1545.50	780	Ø 3.0 THRU
A24	1545.50	1080	Ø 3.0 THRU
A25	1826.50	180	Ø 3.0 THRU
A26	1826.50	480	Ø 3.0 THRU
A27	1826.50	780	Ø 3.0 THRU
A28	1826.50	1080	Ø 3.0 THRU
A29	2107.50	180	Ø 3.0 THRU
A30	2107.50	480	Ø 3.0 THRU
A31	2107.50	780	Ø 3.0 THRU
A32	2107.50	1080	Ø 3.0 THRU
A33	2388.50	180	Ø 3.0 THRU
A34	2388.50	480	Ø 3.0 THRU
A35	2388.50	780	Ø 3.0 THRU
A36	2388.50	1080	Ø 3.0 THRU
A37	2669.50	180	Ø 3.0 THRU
A38	2669.50	480	Ø 3.0 THRU
A39	2669.50	780	Ø 3.0 THRU
A40	2669.50	1080	Ø 3.0 THRU

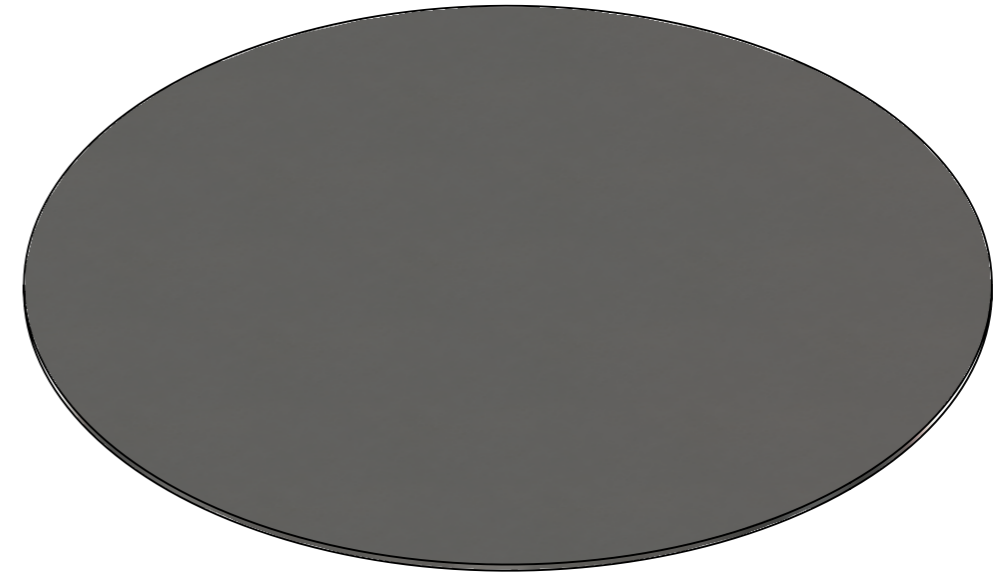
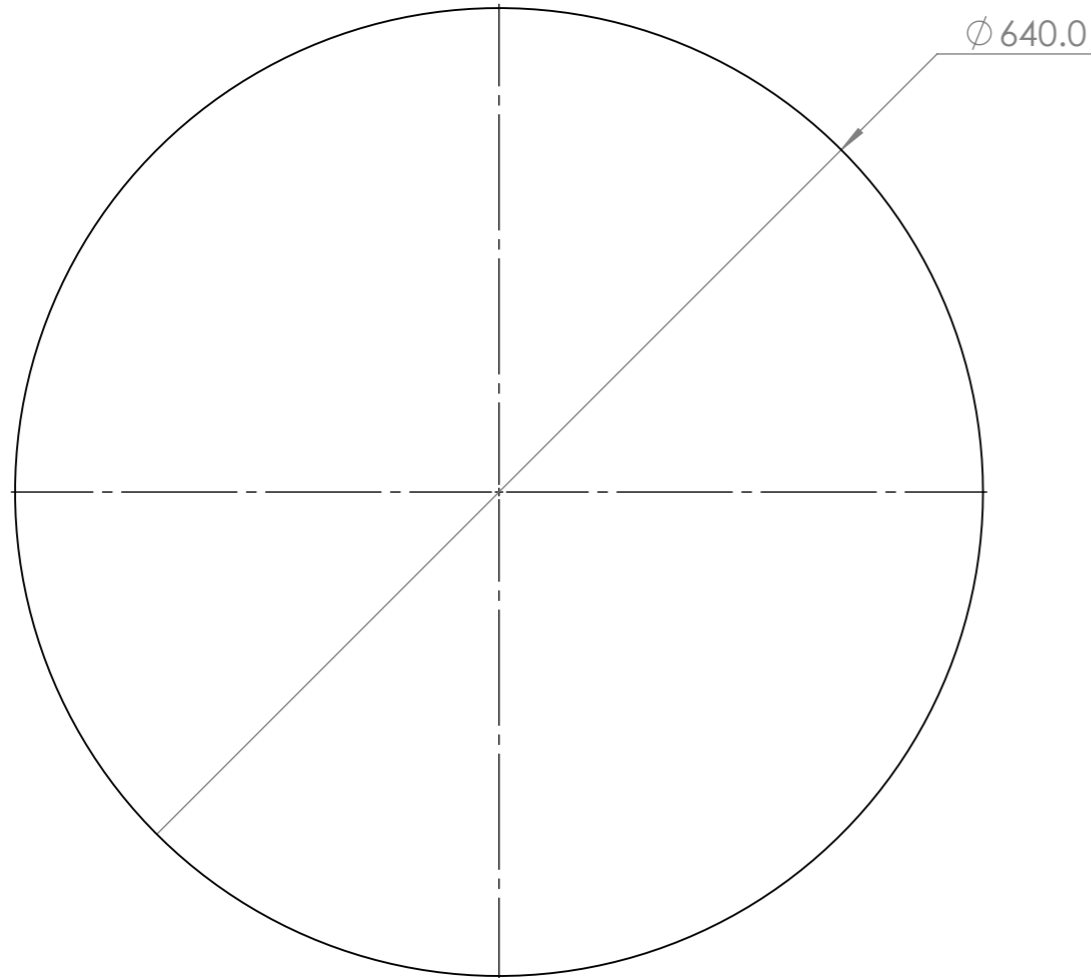


				Revision:	A
Sheet Number	SHEET 3 OF 10	Approx Weight (Kg):	151.26	Date:	
Cad Innovation Ltd.				Material:	Plain Carbon Steel
				Qty:	N/A
Designed/Drawn By	P Hodnett				
Date Drawn	15 August 2024				
Finish	N/A				
Customer	Thomas Dudley				
Project	900mm Diameter Former				
Drawing	900mm Former Body Cylinder (Flat)				
Part Configuration	Default				



CAD Innovation Ltd
Digitally Developing for the Engineered World

IF IN DOUBT ASK

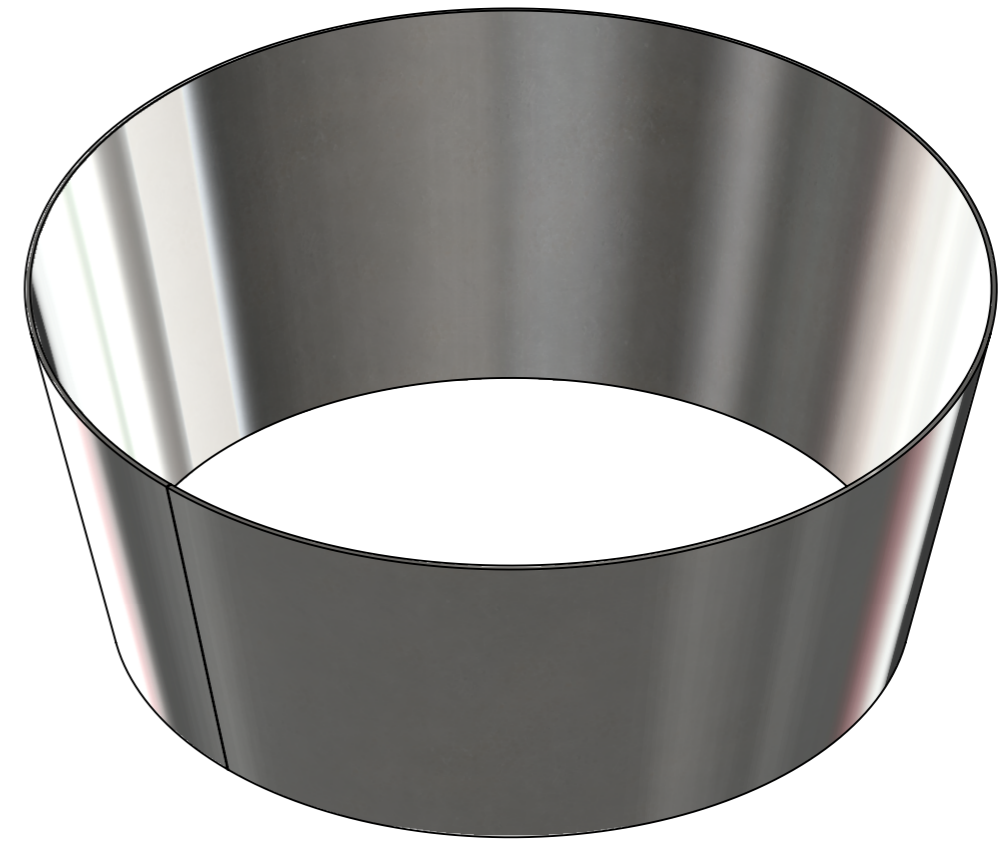
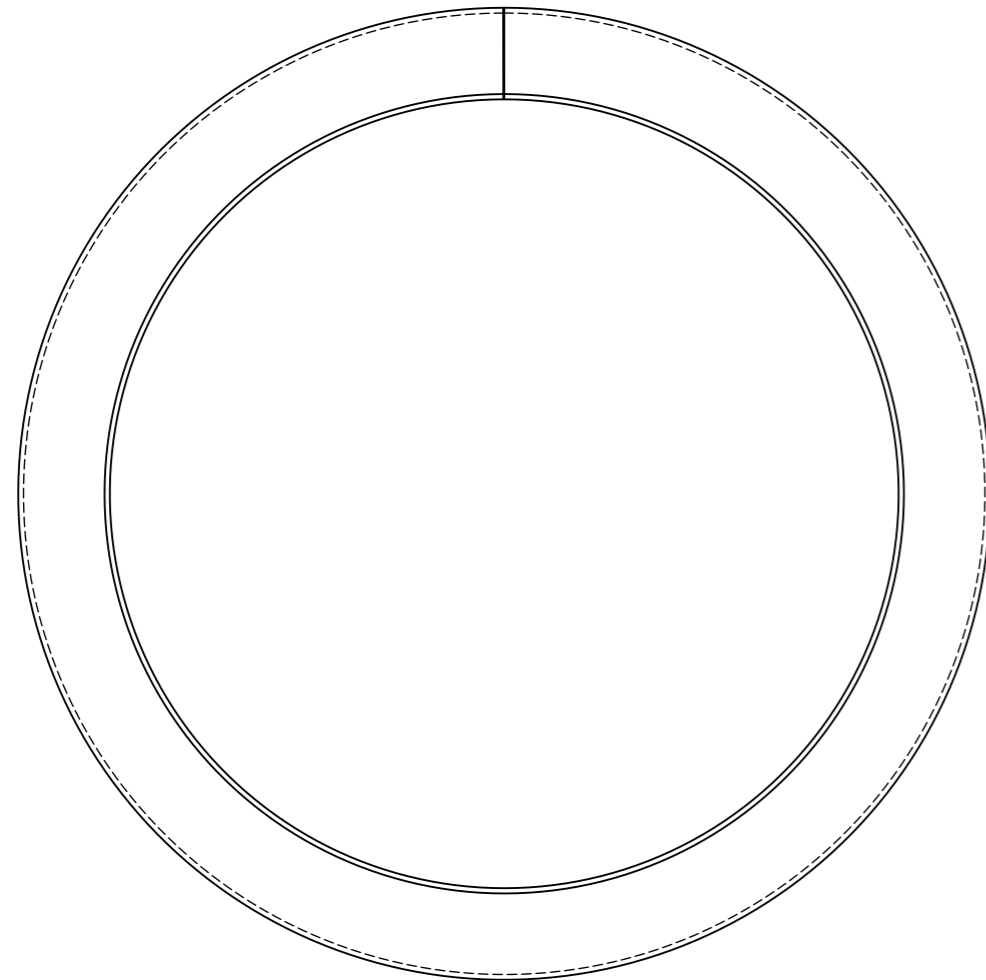
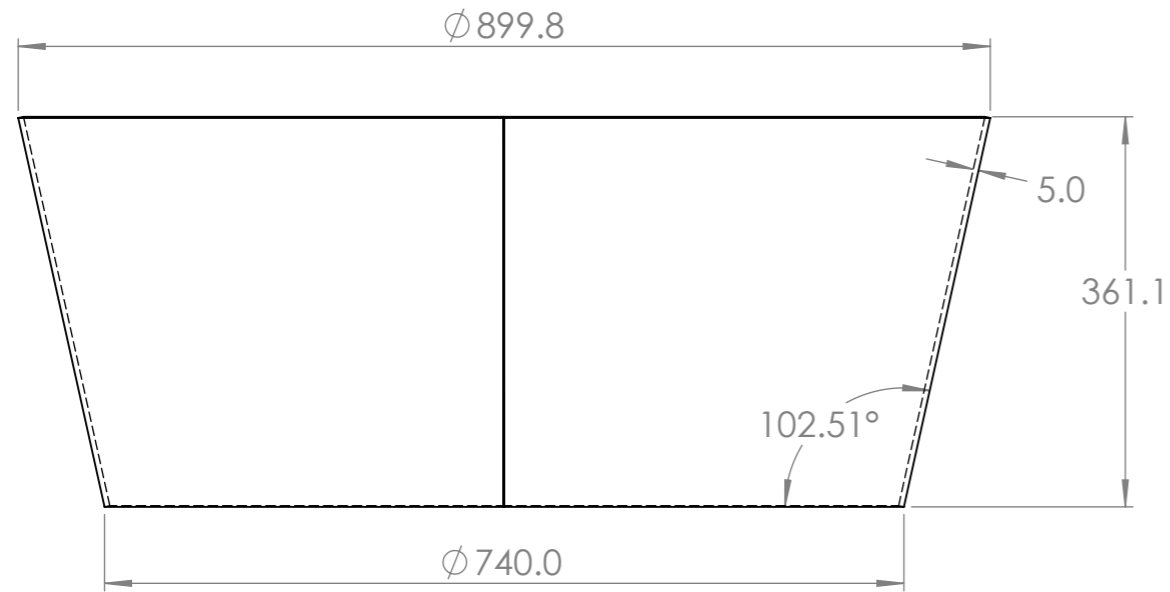


**1 off required per unit.
STEP FILE TO BE USED FOR MANUFACTURE.**

			Revision:	A
Sheet Number	SHEET 4 OF 10	Approx Weight (Kg):	12.55	Date:
Cad Innovation Ltd.			Material:	Plain Carbon Steel
			Qty:	N/A
Designed/Drawn By	P Hodnett			
Date Drawn	15 August 2024			
Finish	N/A			
Customer	Thomas Dudley			
Project	900mm Diameter Former			
Drawing	Base Disk			
Part Configuration	Default			



IF IN DOUBT ASK

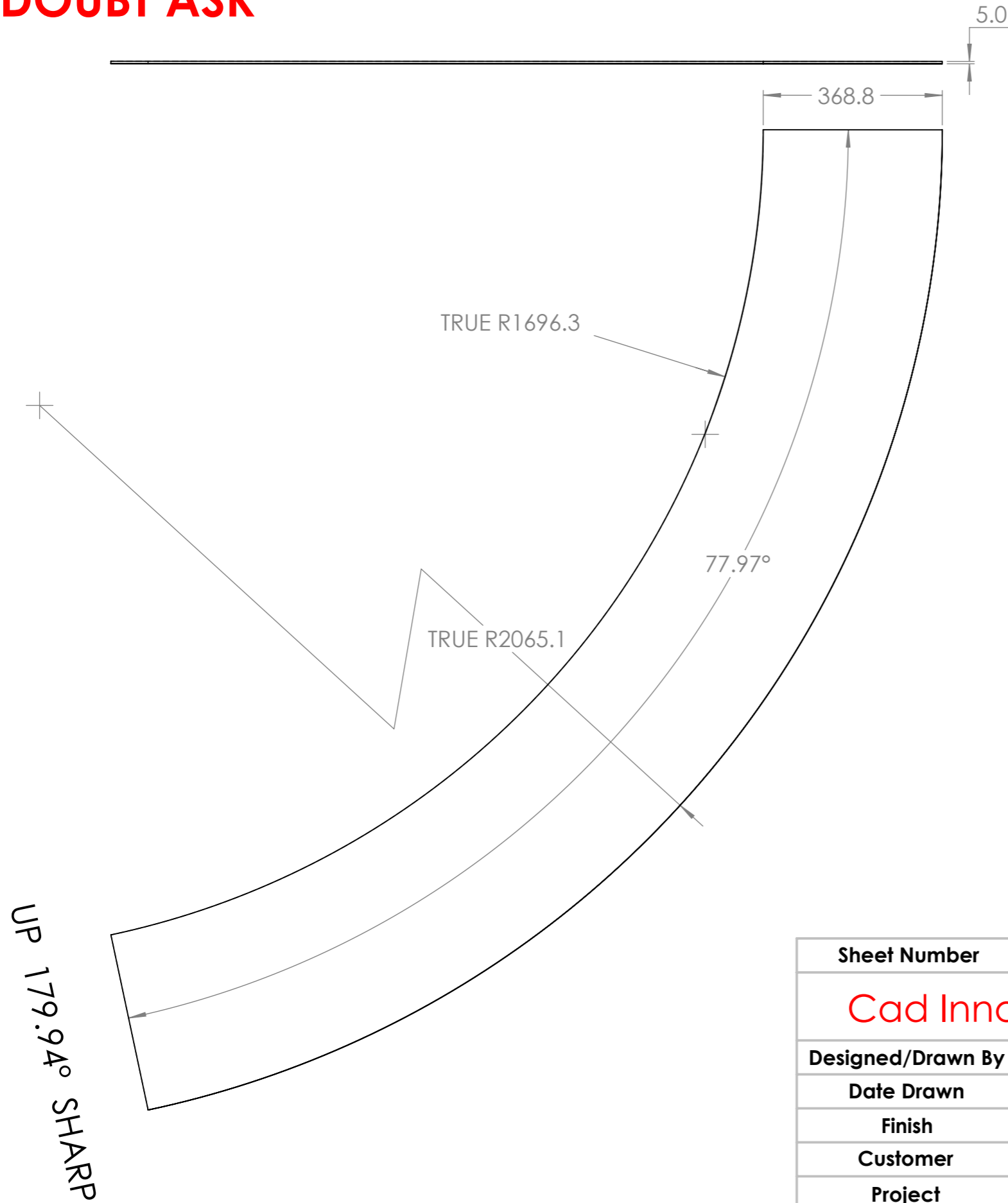


1 off required per unit.
See separate flat panel drawing.
STEP FILE TO BE USED FOR MANUFACTURE.

			Revision:	A
Sheet Number	SHEET 5 OF 10	Approx Weight (Kg):	36.81	Date:
Cad Innovation Ltd.			Material:	Plain Carbon Steel
			Qty:	N/A
Designed/Drawn By	P Hodnett			
Date Drawn	15 August 2024			
Finish	N/A			
Customer	Thomas Dudley			
Project	900mm Diameter Former			
Drawing	Top Cone			
Part Configuration	Default			



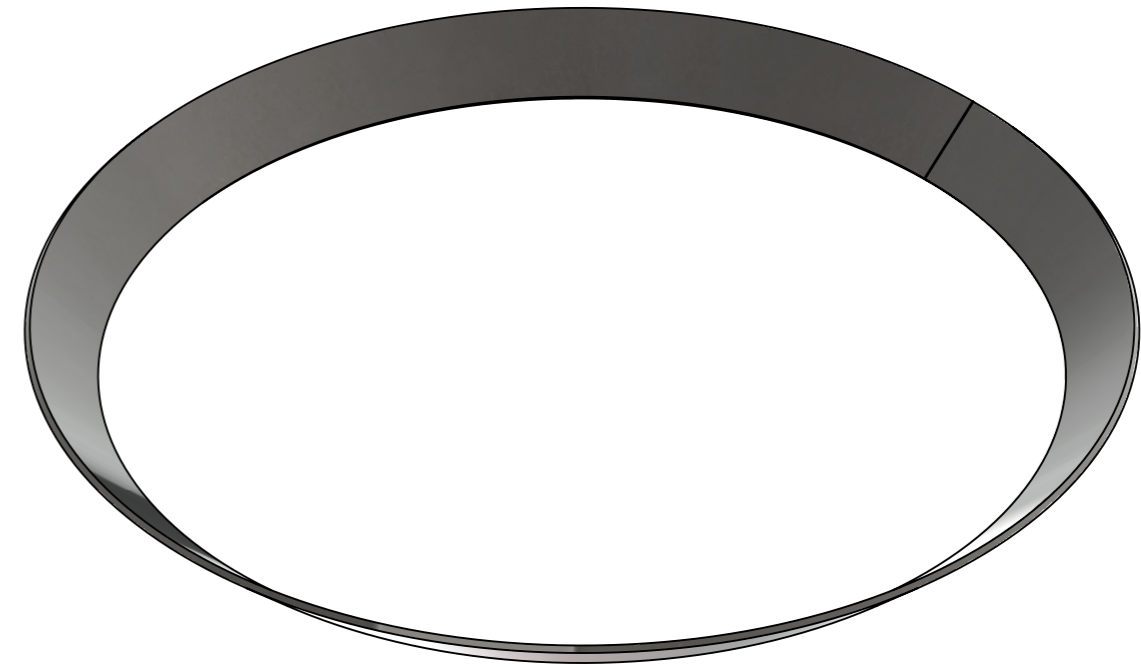
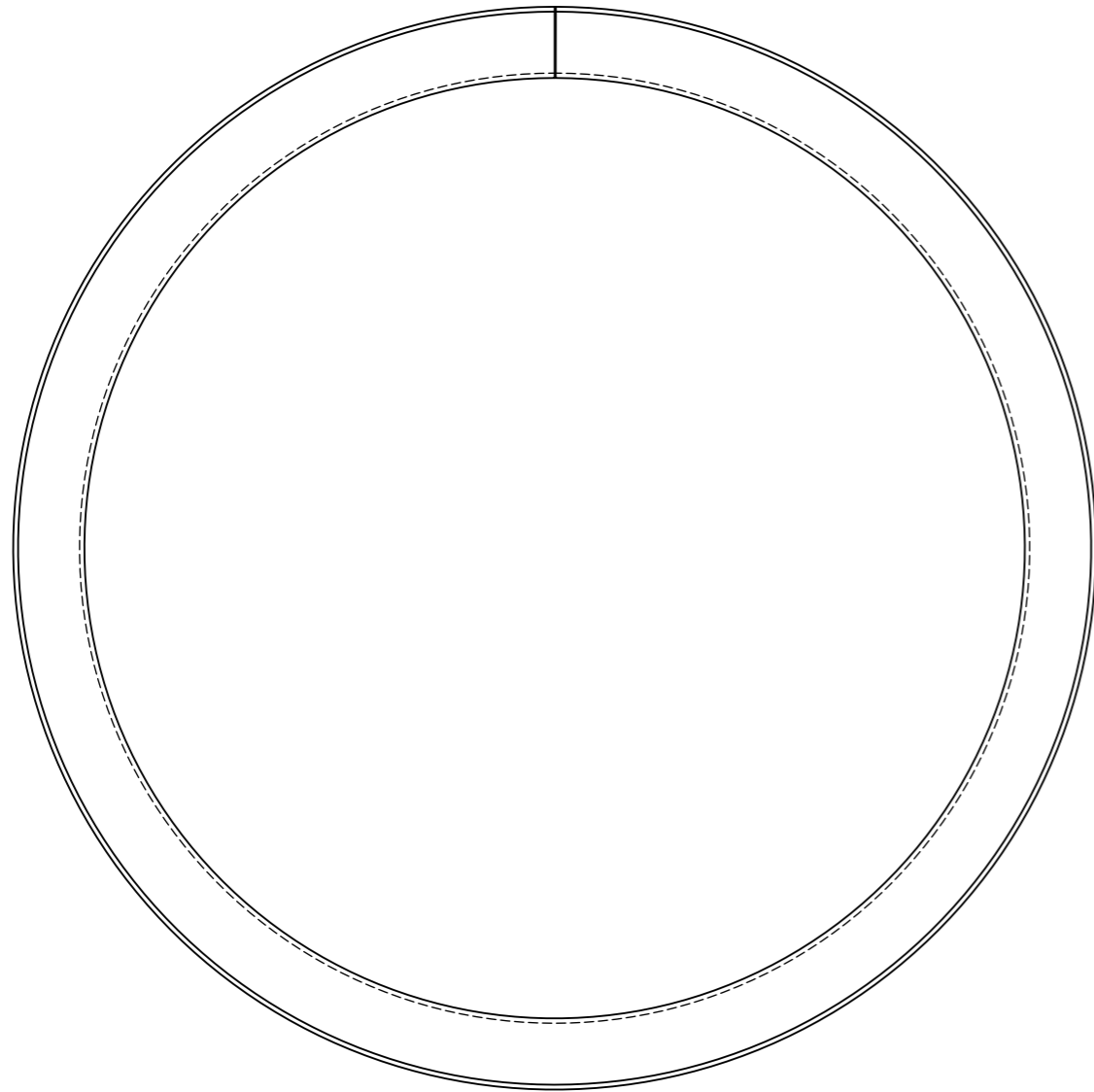
IF IN DOUBT ASK



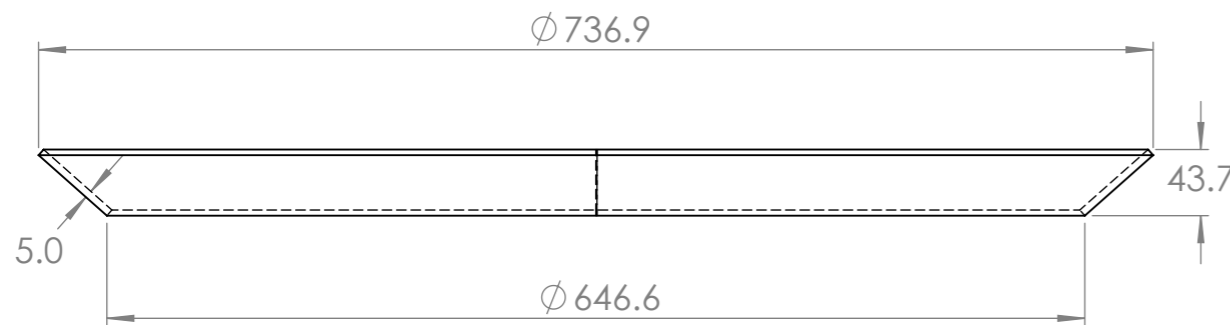
Sheet Number	SHEET 6 OF 10	Approx Weight (Kg):	36.81	Revision:	A
Cad Innovation Ltd.				Date:	
				Material:	Plain Carbon Steel
				Qty:	N/A
Designed/Drawn By	P Hodnett				
Date Drawn	15 August 2024				
Finish	N/A				
Customer	Thomas Dudley				
Project	900mm Diameter Former				
Drawing	Top Cone				
Part Configuration	DefaultSM-FLAT-PATTERN				



IF IN DOUBT ASK



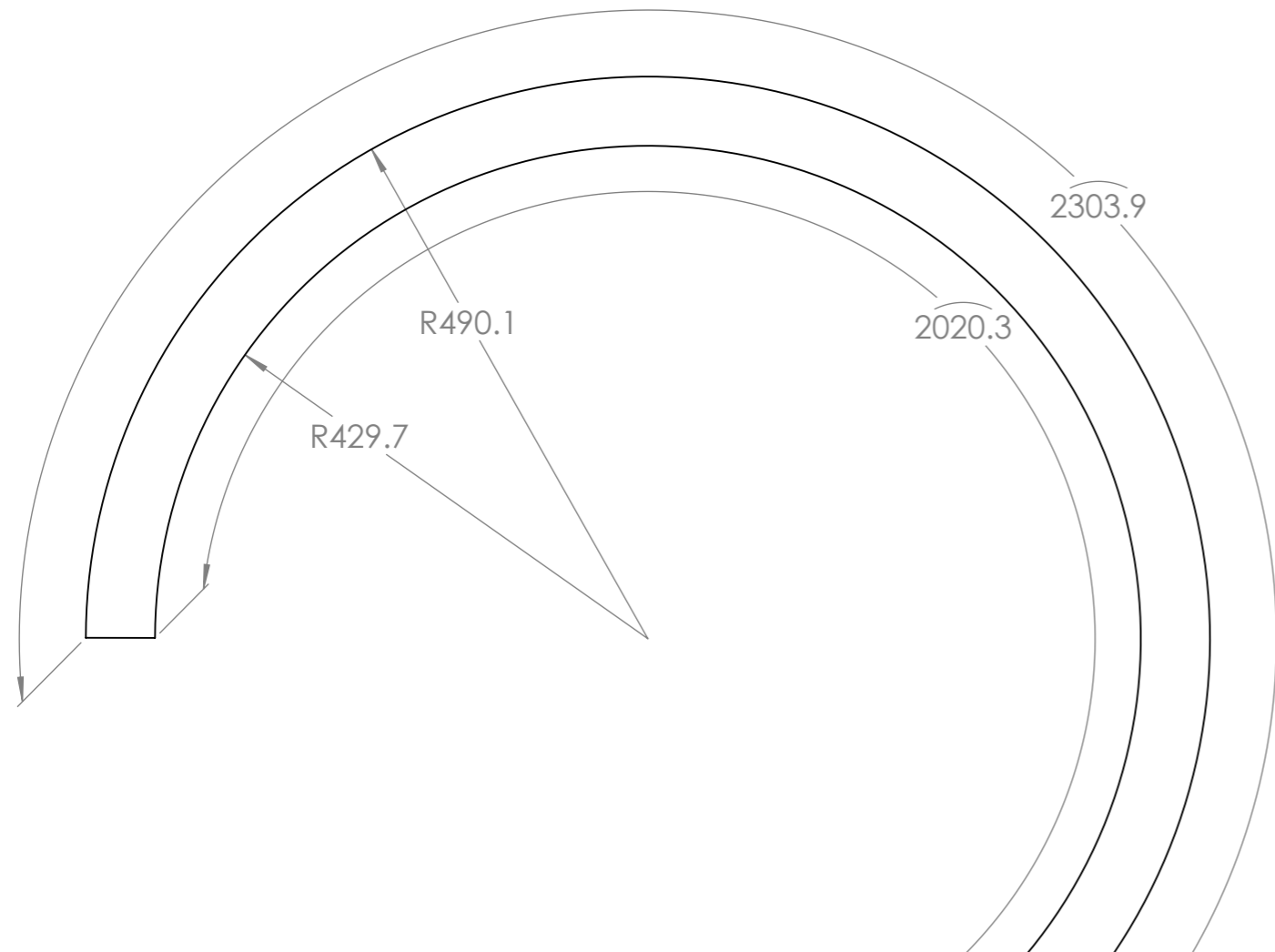
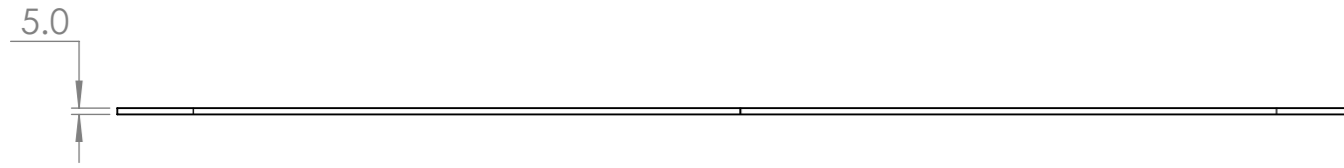
1 off required per unit.
See separate flat panel drawing.
STEP FILE TO BE USED FOR MANUFACTURE.



			Revision:	A
Sheet Number	SHEET 7 OF 10	Approx Weight (Kg):	5.09	Date:
Cad Innovation Ltd.			Material:	Plain Carbon Steel
			Qty:	N/A
Designed/Drawn By	P Hodnett			
Date Drawn	15 August 2024			
Finish	N/A			
Customer	Thomas Dudley			
Project	900mm Diameter Former			
Drawing	Bottom Cone			
Part Configuration	Default			



IF IN DOUBT ASK

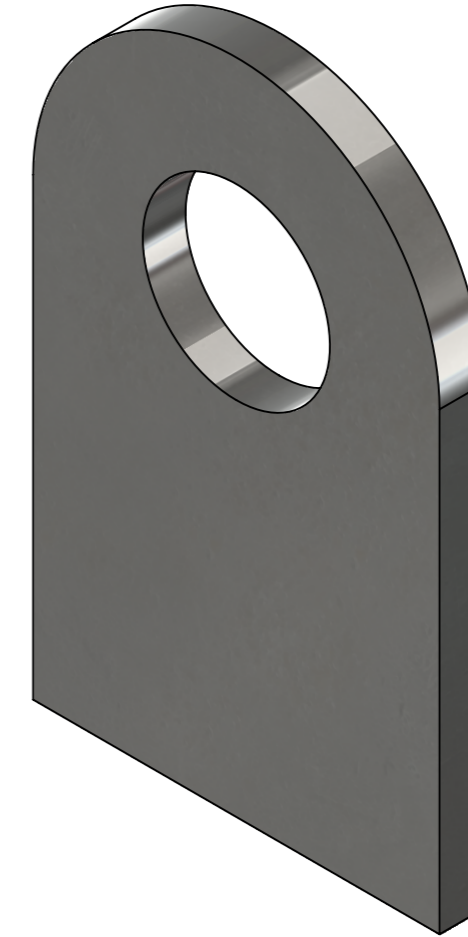
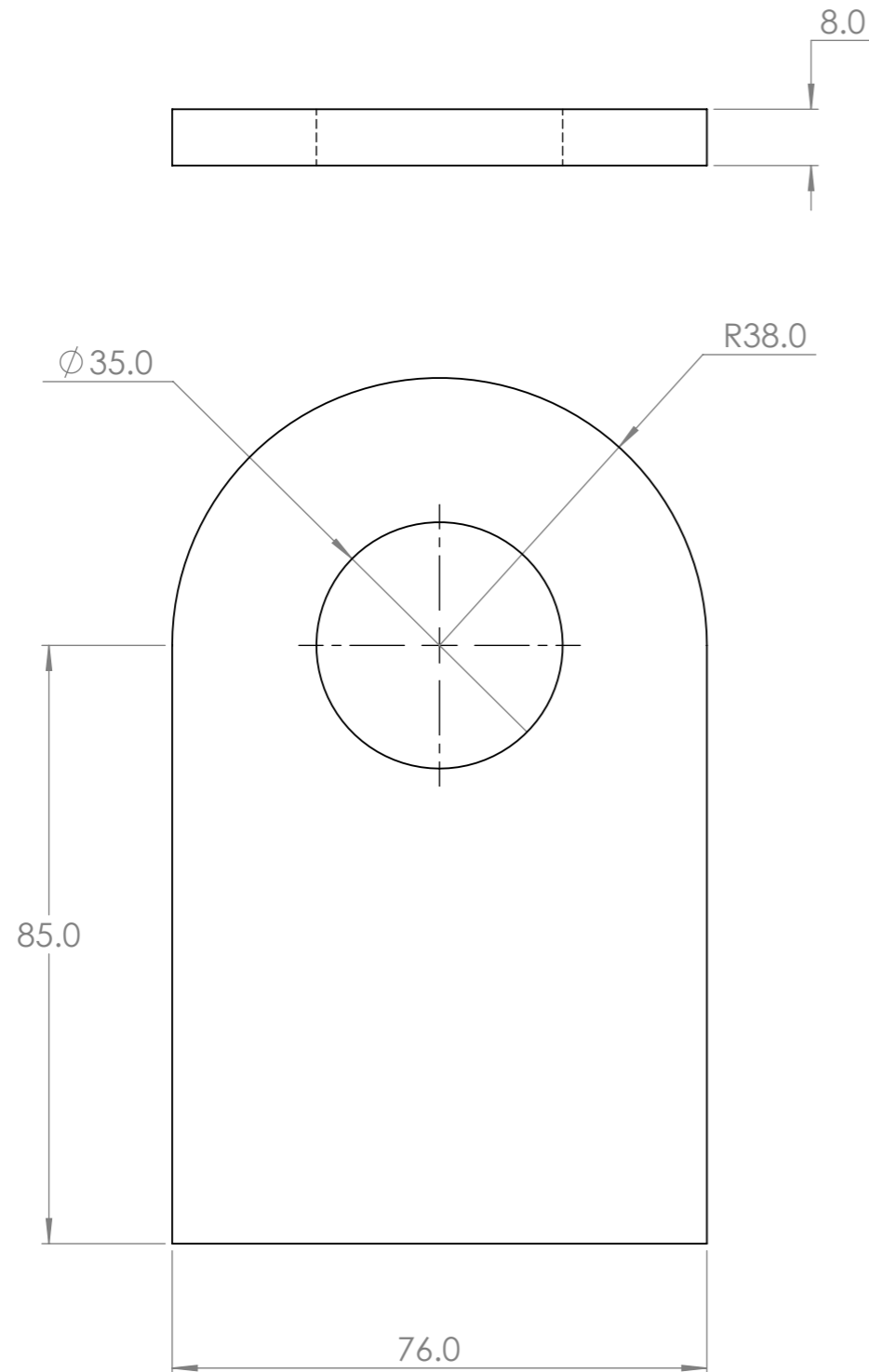


UP 179.94° SHARP

			Revision:	A	
Sheet Number	SHEET 8 OF 10	Approx Weight (Kg):	5.09	Date:	
Cad Innovation Ltd.			Material:	Plain Carbon Steel	
			Qty:	N/A	
Designed/Drawn By	P Hodnett				
Date Drawn	15 August 2024				
Finish	N/A				
Customer	Thomas Dudley				
Project	900mm Diameter Former				
Drawing	Bottom Cone				
Part Configuration	DefaultSM-FLAT-PATTERN				



IF IN DOUBT ASK



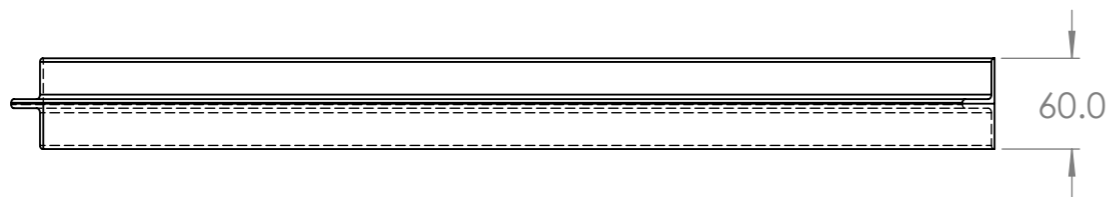
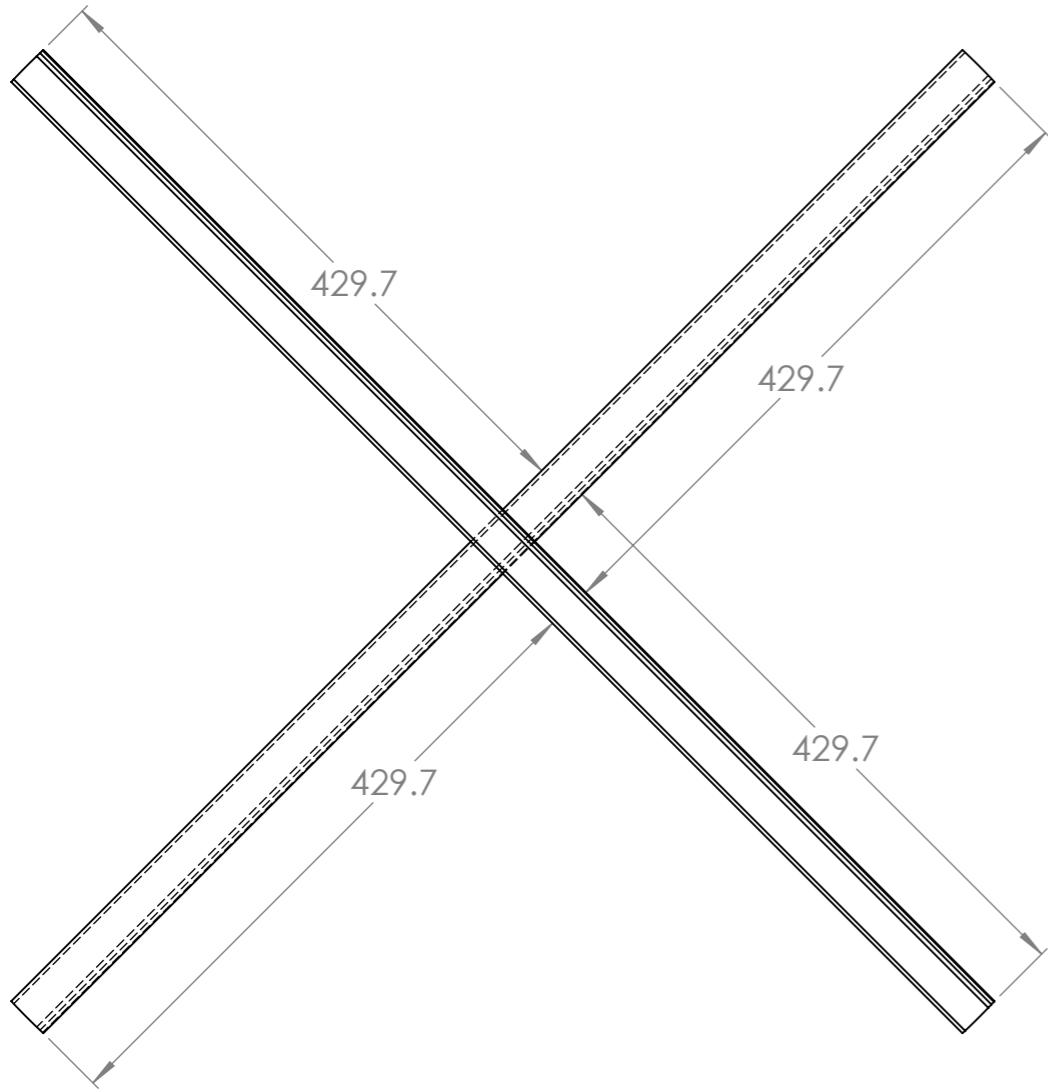
3 off required per unit.
STEP FILE TO BE USED FOR MANUFACTURE.

Sheet Number			SHEET 9 OF 10	Approx Weight (Kg):		0.48	Revision:	A
Cad Innovation Ltd.							Date:	
							Material:	Plain Carbon Steel
							Qty:	N/A
Designed/Drawn By		P Hodnett						
Date Drawn		15 August 2024						
Finish		N/A						
Customer		Thomas Dudley						
Project		900mm Diameter Former						
Drawing		Lifting Tab						
Part Configuration		Default						



IF IN DOUBT ASK

ITEM NO.	QTY.	DESCRIPTION	LENGTH
1	2	RSA30x30x3	890



1 off required per unit.

Sheet Number		SHEET 10 OF 10	Approx Weight (Kg):		2.37	Revision:	A
Cad Innovation Ltd.						Date:	
						Material:	Plain Carbon Steel
						Qty:	N/A
Designed/Drawn By	P Hodnett						
Date Drawn	15 August 2024						
Finish	N/A						
Customer	Thomas Dudley						
Project	900mm Diameter Former						
Drawing	Cross Brace						
Part Configuration	Default<As Machined>						

